

PALMDALE News

Spring 2004

COMEDY & DRAMA ARE IN FULL BLOOM THIS SPRING



SPRINGTIME SHAKESPEARE SET
Eleven days of merriment make up this year's Shakespeare Festival.



EGGHUNT ENDEAVOR EXPECTED
An "egg-citing" time awaits children and adults alike at this annual event.



PALMDALE PRIDE PROMOTED
Spring cleaning is planned during Palmdale Pride Week.

Downtown Developments 3

Business Briefs 4

Improvement Info 5

Parks Projects 6

Playhouse Performances 7

Community Corner 8

Services Directory 8

Dear Resident,

Trees are blooming, and poppies are springing up. These are sure signs of spring and the joy that comes with this season.

There is certainly a positive feeling in the air in Palmdale with spring's arrival and all of the growth that the City is experiencing.

Our City leaders are busy with grand openings of new stores and ground breakings for new parks and other City amenities.

We hope you, too, are feeling the excitement of this prosperous time in our City. Let us know what you think by answering the latest poll on the City Web site at www.cityofpalmdale.org or calling City Hall at 267-5115.



Sincerely,

Barbara La Fata

Barbara La Fata

PALMDALE News

A publication of the
City of Palmdale
Public Information Office
38300 Sierra Highway
Suite A
Palmdale, CA 93550-4798
661/267-5115
*Communication aids
available upon 72 hours'
notice and request.*

Barbara La Fata
Editor
Jenny Nixon
Assistant Editor
Davis Communications
Design
Dave Balian
Photography

CITY COUNCIL
James C. Ledford Jr.
Mayor
James A. "Jim" Root
Mayor Pro Tem

Councilmembers
Mike Dispenza
Steven D. Hofbauer
Richard J. Loa

City Manager
Robert W. Toone Jr.

www.cityofpalmdale.org

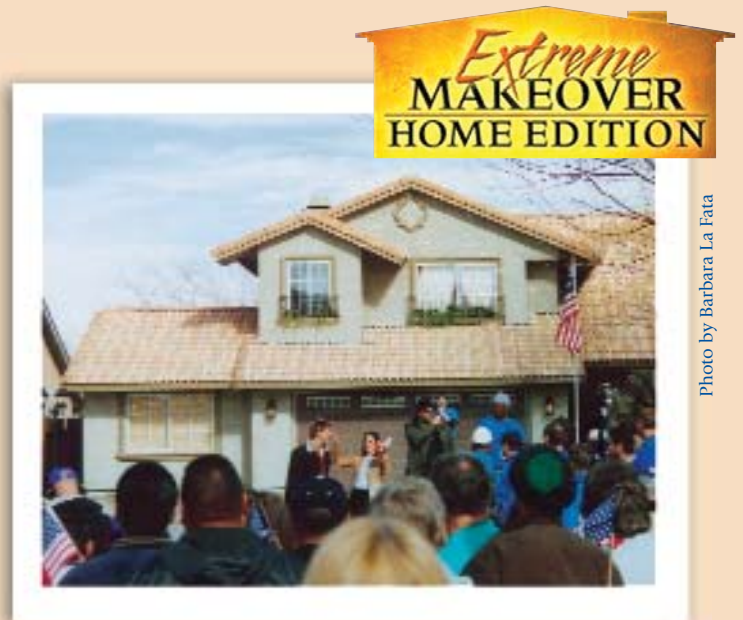
FILM OFFICE ASSISTS WITH "EXTREME MAKEOVER: HOME EDITION" TV SHOW

The hit reality show "Extreme Makeover: Home Edition" was in Palmdale in December to give one lucky family a complete home renovation compliments of ABC television.

A team of designers and construction workers feverishly renovated every room in the Palmdale family's home as cameras captured every detail. The remodel also included an exterior facelift and landscaping overhaul.

The City of Palmdale film office assisted ABC during the film shoot. According to show producers, \$180,000 was spent on the remodel with an additional \$180,000 spent on new furnishings and appliances. Local contractors and retailers were used during the shoot.

The show aired on ABC on February 15.



"Extreme Makeover" design team leader Ty Pennington of Trading Spaces fame talks to designer Constance Ramos as friends and neighbors wait for the family's homecoming in December.

Photo by Barbara La Fata

downtown *developments*

DOWNTOWN BUSINESSES GET NEW LOOK

Six commercial buildings in downtown Palmdale received a new look thanks to \$350,000 in facade and parking lot improvements. The buildings are on the south side of Palmdale Boulevard between 3rd and 5th streets east. The improvements are part of an ongoing effort to revitalize the downtown area.

Improvements include new paint, signage, lighting, electrical and facade detailing. Additional areas will be improved in the target area as funds become available. Grant and redevelopment monies are funding the project.

For more information, call the economic development department at 267-5125.



CITY TO BEGIN CABLECASTING MEETINGS

Residents will soon be able to watch City Council meetings live in the comfort of their living room when the cablecasting program begins this summer.

The program will initially launch with live cablecasts of Palmdale City Council meetings with regularly scheduled re-cablecasts. Promotional announcements featuring City events and programs will also be featured.

Future plans for the City's new cablecasting program include a possible news magazine show, live coverage of special events and a Webcasting component. The City has partnered with Adelphia Communications to provide this service to its residents.

For more information, call the public information office at 267-5115.





ANAVERDE VISITOR CENTER OPENS

The Anaverde master-planned community opened its new visitor center on Feb. 5. This 1,985-acre development will be built at Avenue S far west of Highway 14. Several homebuilders will make up the development including John Laing Homes, KB Homes, Beazer Homes, Richmond American Homes and Forecast Homes.

Anaverde will have 159 acres of dedicated park space; 634 acres of open space; and 42 acres of commercial/retail development. The first phase of the development will include 1,418 single-family detached homes in four distinct neighborhoods.

For more information, stop by the visitor center at 234 W. Avenue S or log on to www.anaverde.net

business briefs

COMMERCIAL AIR SERVICE RETURNS TO PALMDALE

Beginning this spring, Scenic Airlines will begin commercial air service from the Palmdale Regional Airport to the North Las Vegas Airport. This will be the first time commercial service has been offered in Palmdale since April 1998.

The flight will take about 75 minutes in a 19-passenger aircraft. Scenic offers passengers a complimentary shuttle to McCarran International Airport to connect with national and international flights.

For more information, contact the public information office at 267-5120 or visit www.scenicairlines.com



New Retail Blooms Around Town



Panera Bread has drawn record-breaking business at its newest location in Palmdale. The restaurant and bakery is a popular destination for Palmdale's lunchtime crowd.



The 12,000-square-foot Trader Joe's gourmet grocery store opened to cheering shoppers in November.



An 87,000-square-foot Kohl's department store opened on March 5 at Destination O-8 in Palmdale. Destination O-8 is already home to the popular Sam's Club warehouse store. Kohl's stores are stocked with apparel, shoes and accessories for women, men and children plus home products like small electrics, bedding, luggage and more. The department store will employ approximately 100 to

improvement info

AVENUE S CONSTRUCTION ON SCHEDULE



The \$23 million Avenue S corridor improvement project will transform this popular thoroughfare from two to four lanes.

Construction is 20 percent completed on Avenue S to widen this heavily used corridor from two lanes to four lanes from Highway 14 to just east of 20th Street East.

Work began in October 2003 and has focused primarily on grading the site, relocating utilities and constructing the two new northerly lanes of Avenue S between Highway 14 and Sierra Highway. More recently, foundation work started on one of the new bridge structures near 20th Street East.

Once the two northerly lanes of Avenue S are constructed, traffic will be rerouted to these lanes so that the old Avenue S lanes can be demolished and reconstructed into the two southerly lanes.

All four lanes of roadway will open in summer 2005 along with additional improvements like a new bikeway; installation of new traffic signals at 5th and 10th streets east; and a new traffic signal interconnect.

For more information, call the Avenue S information hotline at 265-7265 or log on to www.cityofpalmdale.org/S

TRANSPORTATION CENTER GETS MOVIN'

The \$10.8 million Palmdale Transportation Center is taking shape near 6th Street East just south of Technology Drive. Construction on the Spanish-style station terminal, plaza area and 45-foot clock tower started in April.

The center's master plan calls for a Metrolink commuter rail station, bus service, vanpool and park-n-ride services with future provisions for high speed rail and airport service. The project is funded in part by a \$5.5 million grant from the Metropolitan Transportation Authority. The center is scheduled to open in early 2005.

For more information, call the public works department at 267-5300.



Construction crews installed storm drains at the site of the Palmdale Transportation Center.

PALMDALE PRIDE WEEK

TIRE AMNESTY DAY

Saturday, April 10
9 am to 3 pm
Palmdale Youth Library
38510 Sierra Highway
Standard-sized automobile tires only. Please remove rims.
(Tires from businesses excluded.)
Sponsored by County of Los Angeles. 1/888-CLEANLA.



EXTRA TRASH BAG PICKUP

Week of April 12 to 16
Waste Management will collect up to eight extra trash bags on your regular trash day during this week. Open only to Waste Management customers living in the Palmdale city

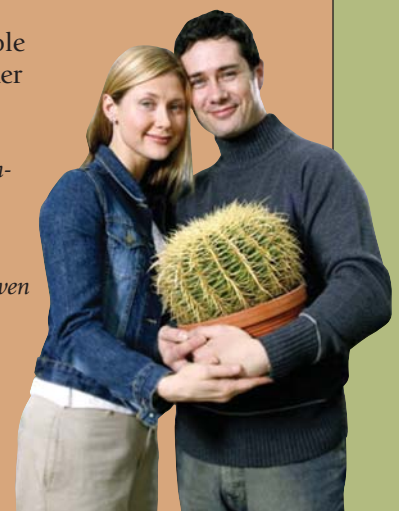


limits. Call 947-7197 for more information.

SMART GARDENING WORKSHOP

Saturday, April 24, 9 to 11 am,
FREE

Larry Chimbole
Cultural Center
38350 Sierra Highway
Learn about composting and water-wise gardening. Free mulch will be given



parks *projects*

NEW PLAYGROUND EQUIPMENT INSTALLED

New playground equipment was unveiled in March at Desert Sands Park, 39117 3rd Street East and Courson Park, 38226 10th Street East, as part of a \$250,000 equipment improvement project.

The project provided new equipment and rubber matting at each park site, an access path at Courson Park and a shade structure at Desert Sands Park. All improvements comply with the Americans with Disabilities Act. The new playground equipment is suited for children aged five to 12.

For more information, call the parks and recreation department at 267-5611.



Local seniors take advantage of the free tax preparation service offered at the Palmdale Senior Center by the American Association of Retired Persons.

SENIOR CENTER OFFERS TAX RETURN HELP

Trained volunteers from American Association of Retired Persons will be at the Palmdale Senior Center through Wednesday, April 14 offering free tax preparation assistance to all seniors aged 55 and older.

Volunteers are available at the center on a first-come, first-served basis on Mondays, Wednesdays and Fridays from 9:30 am to 3 pm.

No appointment is necessary but

participants must bring all tax-related documents such as W-2 forms and last year's tax return. Call 267-5551 for more information.

NEW SKATEPARK OPENS AT DOMENIC MASSARI PARK

Palmdale received its second skatepark on Jan. 10 when the 12,000-square-foot Chris O'Leary Skatepark opened at Domenic Massari Park.

The Palmdale City Council named the skatepark after O'Leary in September 2003 at the request of his mother. O'Leary — who passed away in May 2000 at age 18 — was an avid skateboarder who loved the Antelope Valley and had a strong interest in improving his community and the planet.

Skatepark hours are Monday through Friday from 3 to 8 pm and Saturday and Sunday from 10 am to 8 pm.

For more information, call the parks and recreation department at 267-5611.



Palmdale resident Carlos Sotomayor enjoys the new skatepark at Domenic Massari Park on opening day.

Photo by Rob Layman, courtesy of Antelope Valley Press.

8TH ANNUAL
Shakespeare
Festival

APRIL 15 - APRIL 25



Palmdale City Players Youth present
THE RUDE MECHANICALS
April 15, 16 & 17, 7:30 pm • \$12/\$10 **6g**

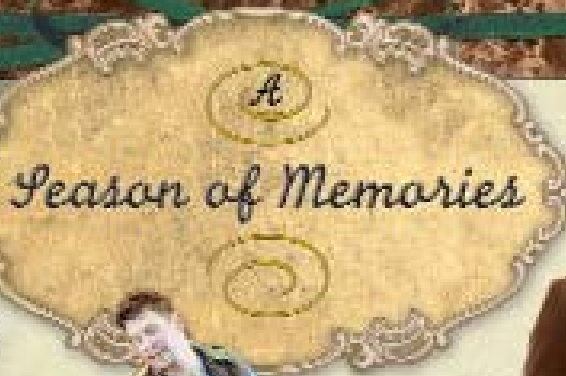
TRAVELOGUE FILM:
STORYBOOK ENGLAND
April 18, 2 pm • \$5

ELIZABETHAN WREATH &
JEWELRY WORKSHOP
April 19, 7 pm
\$10 (plus supplies)

WORKSHOP
ON ACTING
SHAKESPEARE
April 20, 7 pm • \$10

ROMEO &
JULIET
WORKSHOP
April 21, 7 pm • \$10

THE KING'S
NOYSE
April 22, 7 pm
\$16/\$14



State Street Ballet presents
TAMING OF THE SHREW
April 23, 7 pm • \$16/\$14

Will & Company presents
ROMEO & JULIET
April 24, 7 pm • \$16/\$14 **6g**



Will & Company presents
TWO GENTLEMEN OF VERONA
April 25, 2 pm • \$12/\$10 **6g**



The Palmdale Playhouse

Purchase tickets online at
www.cityofpalmdale.org/tickets

PALMDALE PLAYHOUSE BOX OFFICE
38334 10th Street East • Palmdale, CA
661/267-5685



Gospel Jubilee featuring
SOUTHERN JOURNEYMEN
QUARTET
May 1, 7 pm • \$12/\$10

TRAVELOGUE FILM: SPAIN,
LAND OF CONTRASTS
May 2, 2 pm • \$5

JAZZ AT THE PLAYHOUSE
FEATURING RIC ILEJAY
May 8, 7:30 pm • \$15/\$10



Mother's Day
DEBORAH
JOHNSON
May 9, 2 pm
\$16/\$12

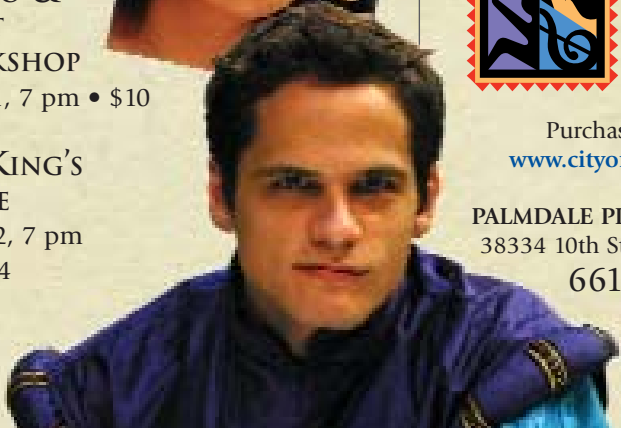
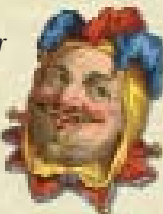
Summer Celebration
PALMDALE YOUTH &
COMMUNITY DANCE COMPANY
May 21, 7:30 pm
May 22, 2 pm • \$7/\$5



PALMDALE YOUTH &
COMMUNITY
ORCHESTRAS
May 22, 7:30 pm • \$7/\$5

PALMDALE YOUTH &
COMMUNITY CHOIR
May 23, 2 pm • \$7/\$5

Second Annual Junior Summer
Theatre Camp presents
THE UGLY DUCKLING
June 11, 7:30
June 12, 2 pm • \$7/\$5 **6g**



SERVICES DIRECTORY

Administration	267-5115
Animal Care and Control	940-4190
Antelope Valley Hispanic Chamber	538-0607
Antelope Valley Human Relations Task Force	877/7-AT-PEACE
Antelope Valley Transit Authority (AVTA)	945-9445
Building & Safety	267-5353
Business License	267-5434
Business Watch Program	267-5153
City Clerk	267-5151
City Council	267-5100
City Hall	267-5100
Code Enforcement	267-5234
Courson Park	267-5690
Courson Park Pool	267-5688
Crime Prevention Programs	267-5170
Desert Sands Park	267-5650
Dr. Robert C. St. Clair Parkway	- - -
Domenic Massari Park	267-5593
Drug and Life-Skills Education (DALE) Program	267-5664
Economic Development	267-5125
Families in <i>Action</i> Program	267-5665
Finance	267-5440
Fire Prevention Office (Emergency 911)	323/881-2411
Graffiti Hotline	94-PRIDE
Hammack Activity Center	267-5663
Hearing Impaired Access—TDD	267-5167
Hillside Park	- - -
Housing Programs	267-5126
Jobs Hotline 24-Hour Recorded Information	267-JOBS
Joshua Hills Park	- - -
Larry Chimbole Cultural Center	267-5656
Manzanita Heights Park	267-5655
Marie Kerr Park	267-5675
McAdam Park	267-5653
McAdam Park Pool	267-5654
Metro Rideshare	273-2425
Neighborhood Watch Program	267-5170
Palmdale Chamber of Commerce	273-3232
Palmdale City Library	
Main	267-5600
Youth	267-5600
Palmdale Film, Convention & Visitors Bureau	267-5120
Palmdale Playhouse	267-5684
Palmdale Playhouse Box Office	267-5685
Palmdale Playhouse 24-Hr. Recorded Information	267-ARTS
Parking Enforcement	267-5436
Parks & Recreation	267-5611
Partners Against Crime (PAC) Program	267-5172
Pelona Vista Park	267-5586
Personnel	267-5400
Planning	267-5200
Poncitlán Square	267-5656
Public Information Office	267-5115
Public Safety	267-5181
Public Works	267-5300
Engineering	267-5272
Maintenance	267-5338
Traffic Signal Maintenance	267-5333
Traffic/Transportation	267-5300
Purchasing	267-5444
Senior Center	267-5551
Sheriff (Emergency 911)	267-4300
South Antelope Valley Emergency Services (SAVES)	267-5191
Special Events	267-5660
Street Cleaning	267-5338
Trash Questions	947-7197
Tree Service	267-5338
Used Oil Recycling	800/449-7587

community corner

Children's Springfest & Egg Hunt

Pelona Vista Park, FREE

Saturday, April 10, 10 am to 2 pm

Egg hunt, kiddie rides, petting zoo, body art, face painting, carnival games.

Egg hunts by age start at 10 am. Candyland Adventure (age 7 and over) starts at 11 am.

Co-sponsored by Coca-Cola Bottling Company, High Desert Medical Group/Heritage Health Care and Waste Management of Antelope Valley.



teen bash

Funland USA, 525 West Avenue P-4
Friday, April 16, 6 to 10 pm

Concert, car show, skate demonstration, and more! Call 267-5611.



Garden Party

Palmdale Water Fair & Festival

2029 East Avenue Q, Palmdale
Saturday, May 15, 9 am to 4 pm
Sunday, May 16, 10 am to 3 pm



Learn about the new Water Conservation Garden Park. Aquadog, fun games, petting zoo, Dr. Wilderness and water magic show. Entertainment provided by Boulevard Knights. Call the Palmdale Water District at 947-4111.



CITY OF PALMDALE

38300 Sierra Highway
Palmdale, CA 93550-4798

PRST STD
U.S. Postage
PAID
Palmdale, CA
Permit No. 99

CAR-RT SORT
Residential Customer
Palmdale, CA
93550 -93551-93552